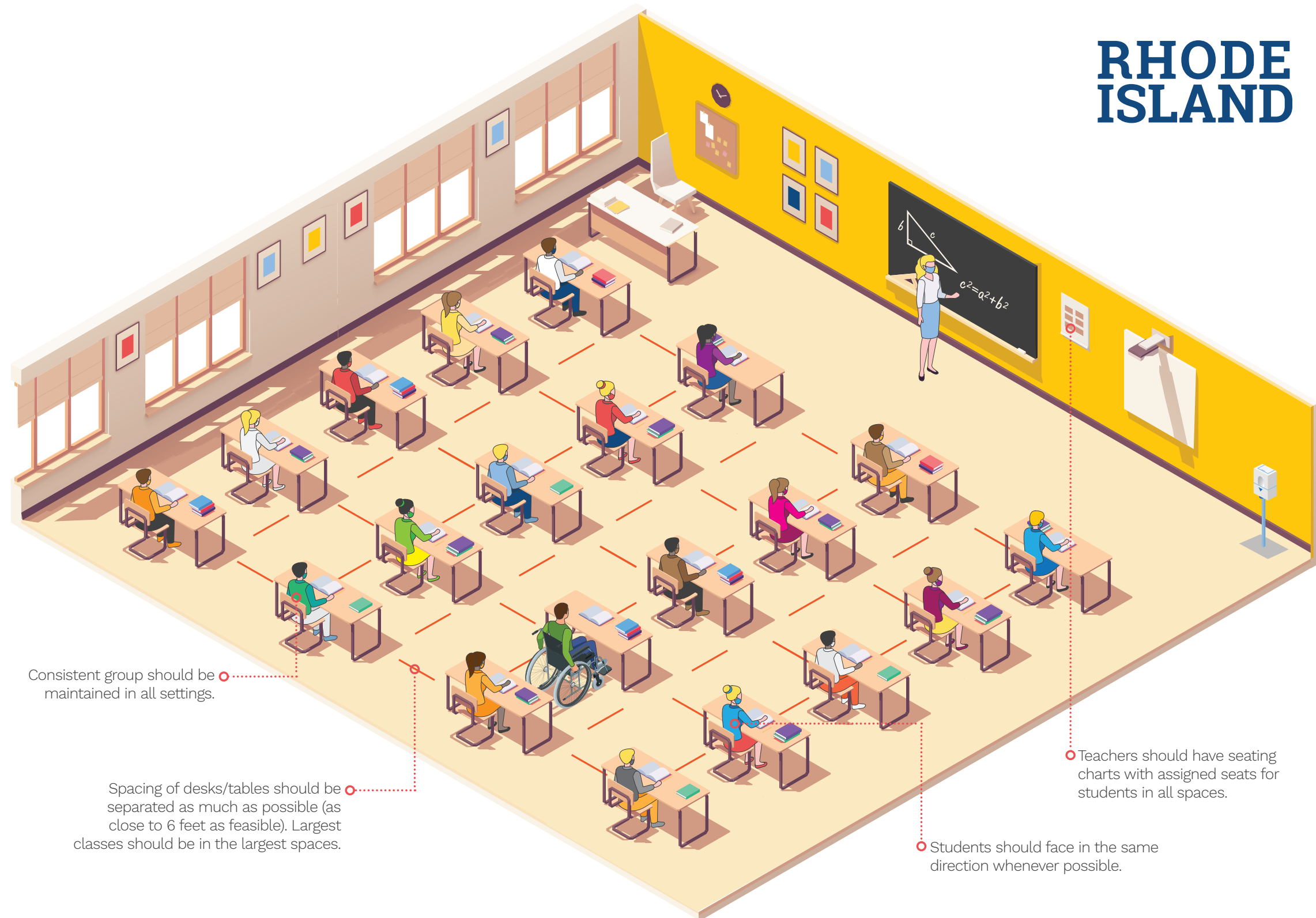


REOPENING RI

High School Guidance

- In large spaces (i.e. gyms, auditoriums... etc.) consistent groups must be at least 14 feet from other consistent groups. Individuals in any indoor space should not exceed the maximum state group size.
- Schools should consider converting non traditional spaces into classrooms to create additional classroom spaces.
- Encourage activities outside whenever possible.
- For high school's that are able to have consistent groups, they should be maintained in all settings.
- For high schools that are not able to have consistent groups, students should stay 6 feet apart all day as much as possible, and wear a mask when 6 feet distancing is not possible.
- Desks and high-touch surfaces should be cleaned between classes when students must change setting.

RHODE
ISLAND



Consistent group should be maintained in all settings.

Spacing of desks/tables should be separated as much as possible (as close to 6 feet as feasible). Largest classes should be in the largest spaces.

Students should face in the same direction whenever possible.

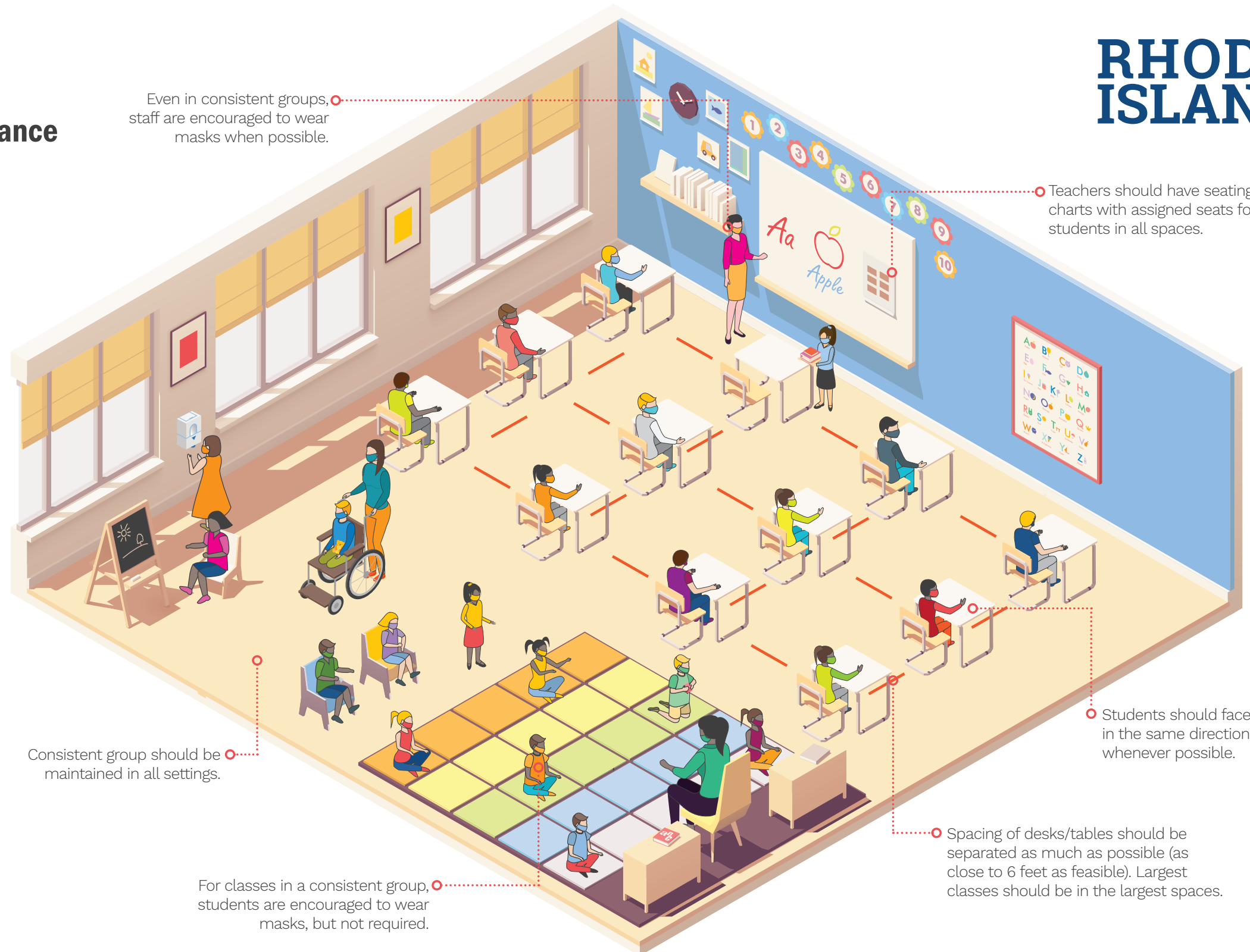
Teachers should have seating charts with assigned seats for students in all spaces.

REOPENING RI

Elementary/Middle School Guidance

- In large spaces (i.e. gyms, auditoriums... etc.) consistent groups must be at least 14 feet from other consistent groups. Individuals in any indoor space should not exceed the maximum state group size.
- Plans are required to include proposals of how different physical lay outs/ set up of classrooms and other spaces should look.
- Schools should consider converting non traditional spaces into classrooms to create additional classroom spaces.
- Encourage activities outside whenever possible.

RHODE
ISLAND

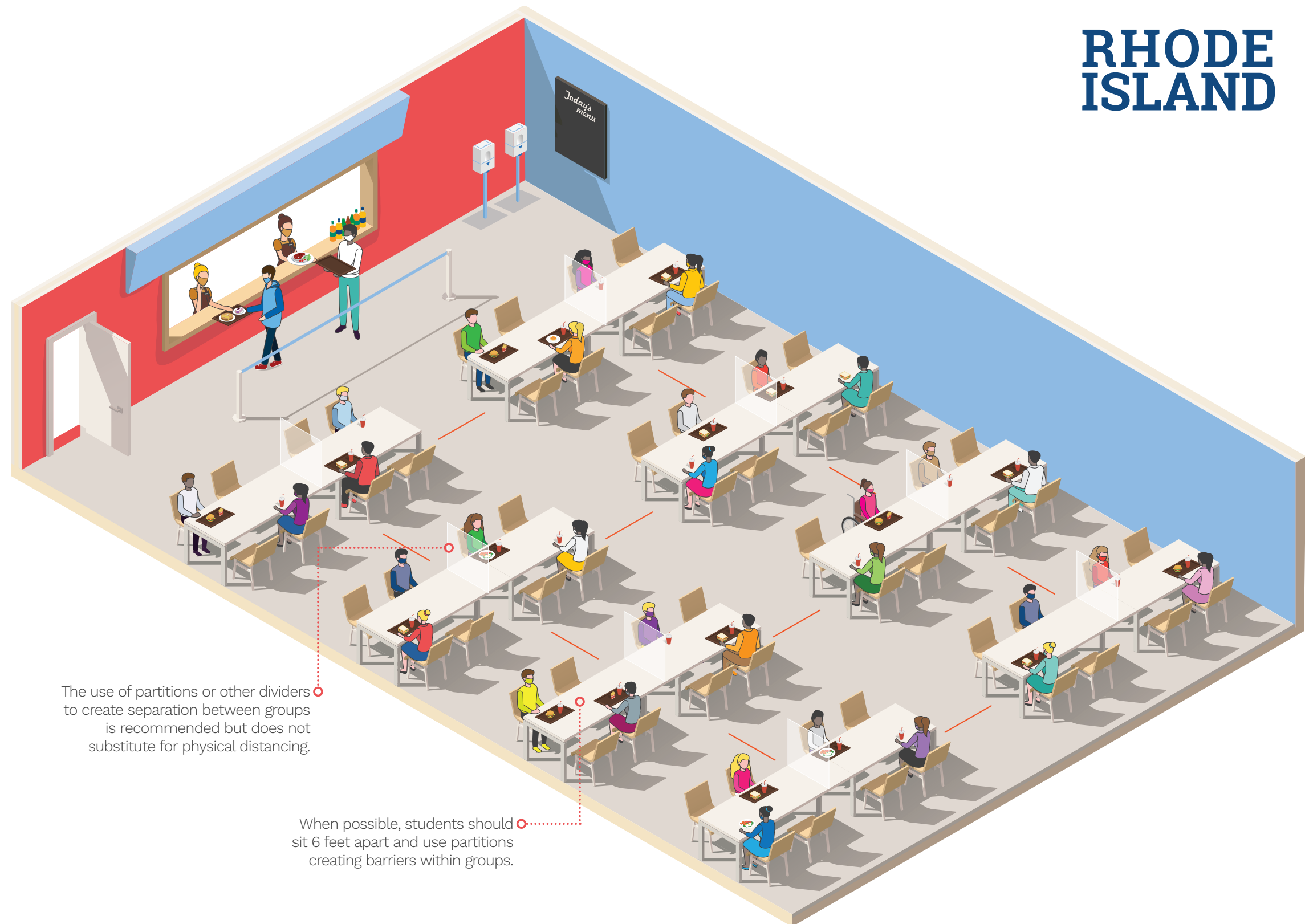


REOPENING RI

School Cafeteria

- This image shows a dining option for high school that is not in consistent groups.
- The number of people in any room for lunch (e.g., the cafeteria) must never exceed the statewide gathering size.
- Tables should be cleaned between uses.

RHODE
ISLAND



○ The use of partitions or other dividers to create separation between groups is recommended but does not substitute for physical distancing.

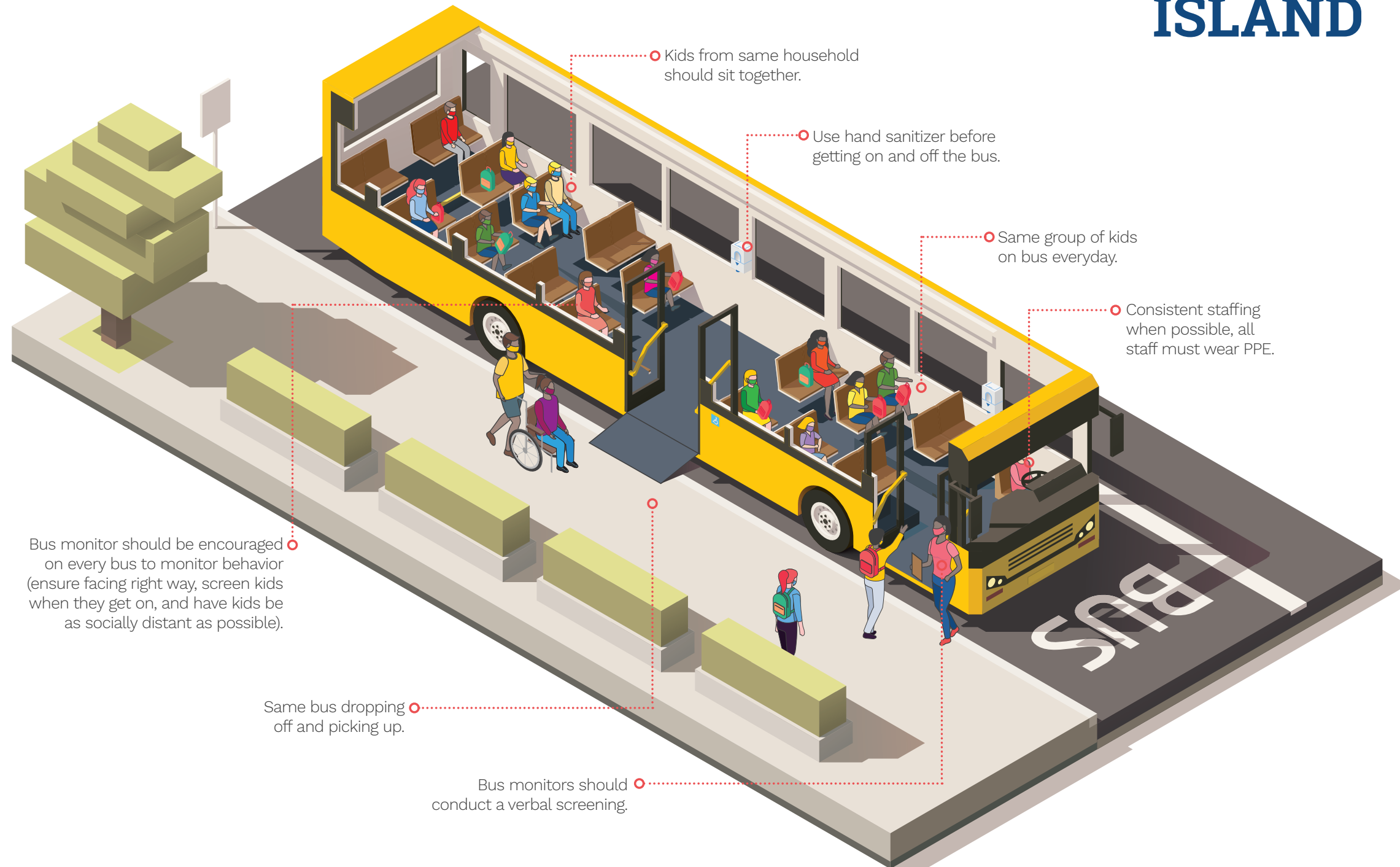
○ When possible, students should sit 6 feet apart and use partitions creating barriers within groups.

REOPENING RI

School Bus

- Image represents guidelines for full in-person scenarios.
- Requiring all kids on busses to wear masks (with the exception of young children under age 2, anyone who has trouble breathing, or is unconscious, incapacitated or otherwise unable to remove the mask without assistance).
- Kids should have assigned seats and be on the same bus going to and from school.

RHODE
ISLAND



REOPENING RI

School Recess

○ Hand washing should happen before and after recess.



RHODE ISLAND